

**SPECIFICATIONS:**

- FREQUENCY: 0.5 - 18 GHz
- NUMBER OF BITS: 1
- INSERTION LOSS: 3.0 dB (REFLECTIVE), 3.5 dB (NON-REFLECTIVE)
- VSWR: 2.0:1 MAXIMUM
- SWITCHING SPEED: 100 nS MAXIMUM, 50 nS TYP.
- FLATNESS: ±1.5 dB MAXIMUM ±1.0 dB TYPICAL
- POWER HANDLING CAPABILITY: 0.1 WATT
- SIZE: (L) 1.3" x (W) 0.7" x (H) 0.4" MAXIMUM
- RF CONNECTORS: SMA FEMALE (REMOVABLE)
- IMPEDANCE: 50 Ω
- POWER SUPPLY: +5V @ 100mA  
-5V @ 80mA
- STEP SIZE (SPECIFY)
 

• 3 dB	• 20 dB
• 8 dB	• 30 dB
• 10 dB	• 40 dB

 (A'=VALUE OF ATTENUATION) (OR ANY COMBINATION OF THESE)
- WEIGHT: APRX. 0.75 OUNCES

**OPTIONS:**

- SINGLE CONTROL WITH SOLDER PIN STANDARD
- 10M18: 10 MHz TO 18 GHz (INSERTION LOSS INCREASES BY 1.5db AT 10 MHz AND 0.5db AT 18 GHz)
  - 100M18: 100 MHz TO 18 GHz (INSERTION LOSS INCREASES BY 1.5db AT 100 MHz AND 0.5db AT 18 GHz)
  - 118: 1 GHz TO 18 GHz (NO CHANGE IN INSERTION LOSS)
  - 218: 2 GHz TO 18 GHz (NO CHANGE IN INSERTION LOSS)
  - 412: 4 GHz TO 12.4 GHz (NO CHANGE IN INSERTION LOSS)
  - 618: 6 GHz TO 18 GHz (NO CHANGE IN INSERTION LOSS)
  - 1218: 12 GHz TO 18 GHz (NO CHANGE IN INSERTION LOSS)
  - 100M20: 100 MHz TO 20 GHz (INSERTION LOSS INCREASES BY 1.5db AT 100 MHz AND 1.0db AT 20 GHz)
  - 220: 2 GHz TO 20 GHz (INSERTION LOSS INCREASES BY 1.0db AT 20 GHz)
  - 1020: 10 GHz TO 20 GHz (INSERTION LOSS INCREASES BY 1.0db AT 20 GHz)
  - B01: -12V POWER SUPPLIES
  - B02: -15V POWER SUPPLIES
  - B03: REVERSE LOGIC "1"=ON "0"=OFF
  - B04: DRIVERLESS, CURRENT CONTROLLED
  - B05: HIGH SPEED, TURNON/TURNOFF 20 nsec MAXIMUM WHEN APPLICABLE OR OPTION HS
  - B06: HIGH POWER - SPECIFY CW POWER, PEAK POWER, PULSE WIDTH, DUTY CYCLE, RF FREQUENCY AND BANDWIDTH
  - B07: CUSTOM DESIGNED PRODUCT- SPECIFY INITIALS OF CUSTOMER
  - B08: LOW VIDEO TRANSIENTS - SPECIFY VIDEO BANDWIDTH
  - B09: LOW INSERTION LOSS VERSION
  - B10: HIGHER ISOLATION VERSION

**ENVIRONMENTAL RATINGS:**

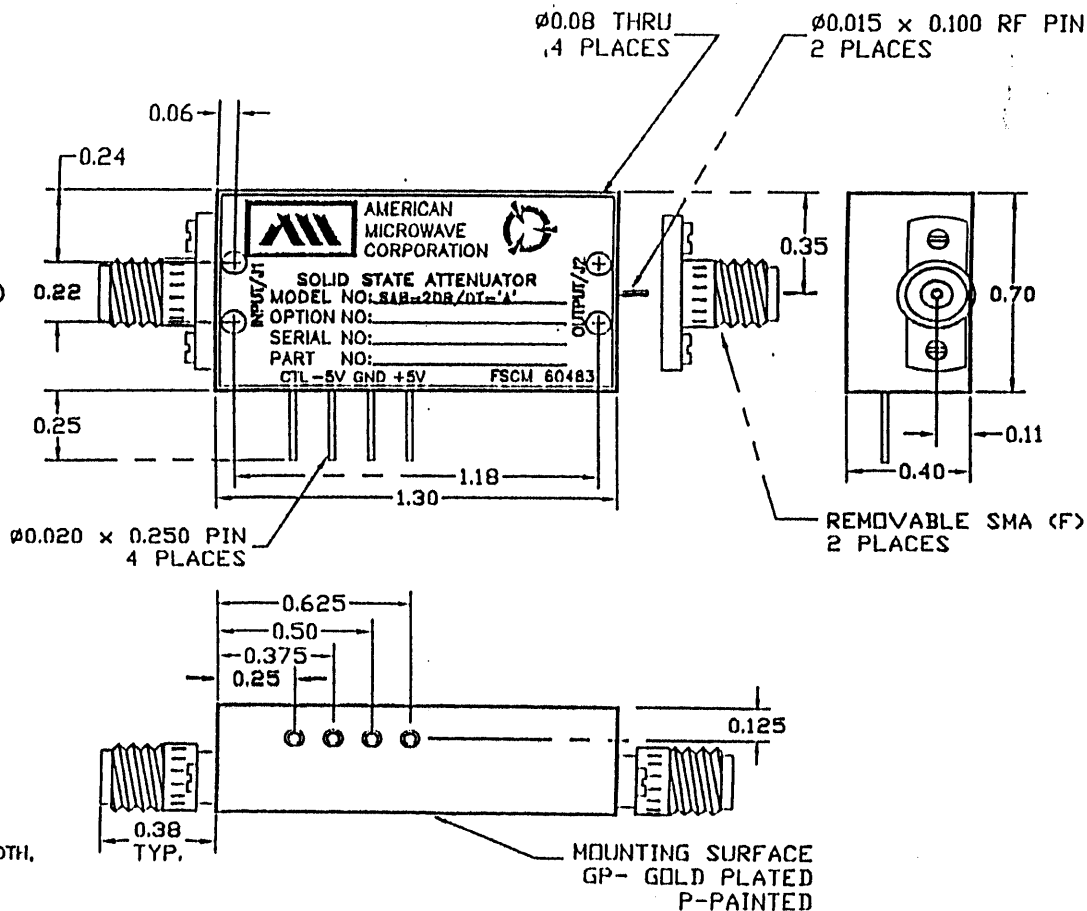
- TEMPERATURE: -55°C TO +85°C (OPERATING)  
-65°C TO +125°C (STORAGE)
- HUMIDITY: MIL-STD-202F, METHOD 103B COND. B
- SHOCK: MIL-STD-202F, METHOD 213B COND. B
- VIBRATION: MIL-STD-202F, METHOD 204D COND. B
- ALTITUDE: MIL-STD-202F, METHOD 105C COND. B
- TEMPERATURE CYCLE: MIL-STD-202F, METHOD 107D COND. A

NOTE: THE ABOVE SPECIFICATIONS ARE SUBJECT TO CHANGE OR REVISION

ALL DIMENSIONS ARE IN INCHES  
TOLERANCES:

X.XX ±0.020  
X.XXX ±0.010

ZONE		REV.	DESCRIPTION	DATE	APPROVED
			ORIGINAL RELEASE	8/28/98	



PART NO.		AMERICAN MICROWAVE CORPORATION FREDERICK, MARYLAND			
APPROVALS	DATE	TITLE			
DRAWN	8/20/98	PRODUCT FEATURE			
CHECKED	7/1/99	SAB-2DR/DT-'A'			
ISSUED	7/1/99	SOLID STATE STEP ATTENUATOR			
		(A' = SPECIFIED VALUE OF ATTENUATION)			
SIZE	FSCM NO.	DWG NO.	REV.		
A	60483	100-4496			
SCALE		SHEET 1 of 1			